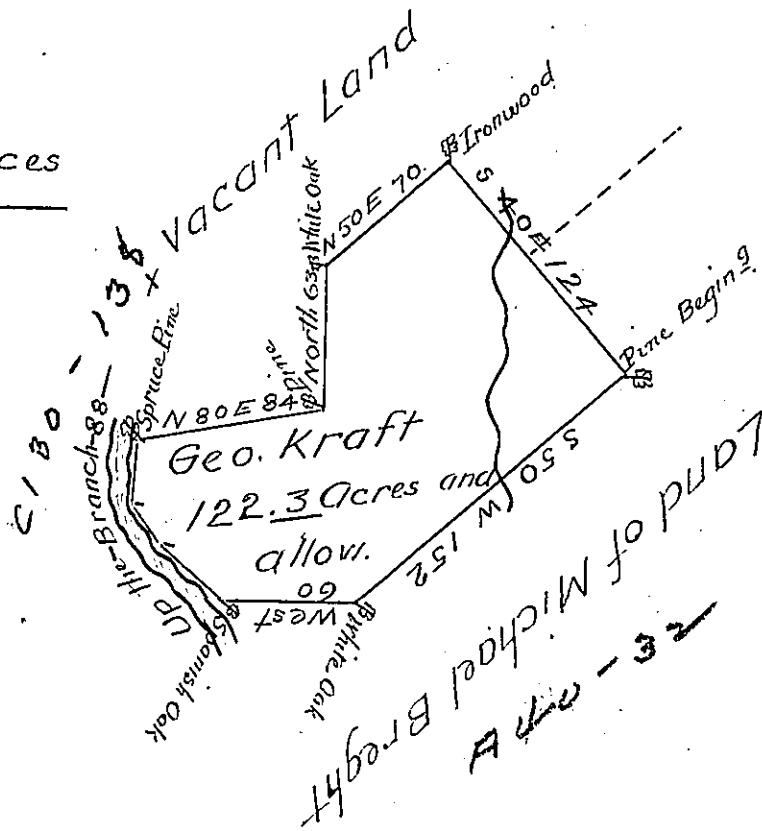


Courses and Distances
up the Branch

N 49 W 40 -
N 37 W 20 -
N 5 E 28 -
88 -



The Draught of a Tract of Land called The Evergreen Grove situate on the N.W. Branch of Middle Creek in the County of Cumberland containing One Hundred Twenty Two Acres Sixty seven Perches with the usual allowance of six acres Percent for Roads Survey'd the 7th day of May Anno Dom: 1767 In Pursuance of an Order of Survey to George Kraft No 599. Bearing Date at Philad^a the first day of August Anno Dom: 1766

P. W^m Maclay D.S.

To John Lukens Esq^r S.G.
of Pennsylvania

IN TESTIMONY that the above is a copy of the original remaining on file in the Department of Internal Affairs of Pennsylvania, made conformably to an Act of Assembly approved the 16th day of February, 1833, I have hereunto set my Hand and caused the Seal of said Department to be affixed at Harrisburg, this Twenty first day of June 1904.

James R. Brown
Secretary of Internal Affairs.